



**Innovative
shelter solutions...
delivered**

AFFORDABLE. VERSATILE

ABOUT US

Ahura Enterprise Pvt. Ltd. is a leading manufacturer of new, multi-purpose portable buildings. Based in Baroda, India, our company is able to deliver high-quality portable buildings / bunk houses / high end weekend homes at excellent prices to all destinations.

Years of experience, expertise & skill along with modern facilities, equipment & technology have given shape to extraordinary products to meet high standard specifications. Our range of prefabs are designed & developed based on standard ISO specification & conditions. Our cabins are structurally extremely stable, earthquake proof, weather proof, termite proof, leak-proof and provide faultless operation under extreme climatic conditions. These units can be moved / shifted by means of cranes and trucks / trailers.

Requiring no foundations and no additional structural stability, **our versatile buildings are ideal for** shelters • temporary or permanent living quarters • portable offices • studios • mining camps • construction housing • field offices • worker housing • portable emergency clinics • storm shelters • military / police posts • forest / mountain cabins • shops, ATMs • security booths • toll booths • on-site toilets and endless other applications for your versatile needs.

We even have the technology to join multiple units together forming bigger project offices as per specific customer requirements. Units may also be joined vertically one over the other to save on floor space.

In a nutshell, Ahura Enterprise Pvt. Ltd. is your best solution partner when it comes to any form of portacabin / bunkhouse.



Expertise & Skill along with Modern facilities, equipment & technology have given shape to extraordinary products to meet high standard specifications.



Our cabins are structurally extremely stable, earthquake proof, weather proof, termite proof, leak-proof and provide faultless operation under extreme climatic conditions.

COMPANY VALUES



INTEGRITY

Our longstanding and uncompromising commitment is to be honorable and trustworthy in all our endeavors.



COMMITMENT

We have built our reputation on our dedication to our employees and our pledge to provide the best solution for our business partners.



TEAMWORK

We succeed together by leveraging the strengths of our people and the diversity of their ideas; always striving to bring out the best in each other.



INNOVATION

We draw upon our heritage and passion to provide creative solutions that meet the needs of those who rely on us.

IN ACHIEVING OUR AIM, AHURA WILL



Be a Quality Driven Company by Doing What We Say; Doing it Right the First Time, on Time, Every Time



Exceed Our Customers' Expectations Through Innovative Products, Processes, Solutions and Services



Encourage, Recognize, Reward and Respect our Employees



Be an Ethical, Environmentally Responsible Company and be Involved in our Local Communities



Help our Customers Increase their Profitability





PRIMARY EXCELLENCE GOALS

1. Provide the Best Dwelling / Storage Solution for your versatile applications
2. Provide Superior Sales and Service Capability
3. Make it Easy to Do Business with AHURA



MISSION STATEMENT

At Ahura, we strive to develop and manufacture the industry's most advanced portable structures using advanced technologies.

We translate these advanced technologies into value for our customers through our professional solutions & services.



ADVANTAGES



INDUSTRIAL
COMMERCIAL
SOLUTIONS

SAFE & SECURE
SOLUTIONS

MORDEN PORTABLE
STRUCTURES





RENT-A-CABIN (Lease Option)

FULLY FURNISHED PORTACABIN & BUNKHOUSE

Ahura also provides prefab solutions on lease / rent across the country. **Units available range from site offices, accommodation units, security and guard houses, toilets, laundry units etc. All the above come in various sizes of 20', 30' and 40' units.** All these facilities are available immediately on rent and ready to use within hours of unloading. There are several advantages in leasing over purchase. For the buyer there are no capital blockages since the lessee has to pay only the rent.

Further, maintenance cost will be minimum. Also, the user will be able to get complete on-site logistics and support by availing of this facility. The concept of leasing of prefab structures is likely to become popular among users due to its inherent advantages.

FOR THE BUYER THERE ARE NO CAPITAL BLOCKAGES SINCE THE LESSEE HAS TO PAY ONLY THE RENT.

PRODUCT DESCRIPTION

All portable buildings for dwelling / multi-purpose are manufactured from new, ISO standard steel. Available in a wide range of regular sizes, they can also be customized to a size as per your specific requirement. Our cabins can be transported via all standard modes of transport.

Requiring no foundations and no additional structural stability, our versatile buildings are ideal for shelters, temporary or permanent living quarters, portable offices / studios, mining camps, construction housing / field offices, worker housing, portable emergency clinics, storm shelters, military / police posts, forest / mountain cabins, shops, ATMs, security booths, toll booths, on-site toilets and endless other applications for your versatile needs. **Rugged and durable, our units are perfectly suited for disaster relief, emergency housing, and harsh conditions. They can withstand natural disasters including hurricanes, tornadoes and earthquakes. Without anchoring, our units can resist winds up to 125 kmph.** There are a variety of models, options, and configurations available. These can range from basic models (with windows, entrance doors, ACs, electrical wiring, telephone connection, internet connection, two inches of rigid insulated finished walls/ceiling, vinyl floor covering and utility room) to those models with many amenities such as special panel rooms, gas stations, cabins with kitchenette, bathroom with shower, bedroom etc.

We also offer toilet only units (with showers, WCs, urinals and sinks only); connecting units (great for bigger project offices dining rooms, clinics, classrooms, etc); and custom models.



POSSIBLE USES



Site Offices



Accommodation for
Site Engineers



Sleeping Quarters



Restaurant Kitchen



Defence Forces / Civil



In-factory Shop
Floor Cabins



Medical Dispensary



Laboratory



Check Posts



Shops / Vending Outlets



Security Cabin



Weekend Homes



Toll Booths



Bath / W.C.



Conference Rooms



Panel Rooms



Toilet



Rent-A-Cabin

ACCOMMODATION



CONTROL ROOMS



TESTIMONIALS

“

Very co-operative services
& excellent quality

Mr. Ankit Shah
Director –
V India Engg. & Const.

”



KITCHEN + DINING



ADVANCED TECHNOLOGY



LABS + HEALTH CENTRES



TESTIMONIALS

"I have had the pleasure of working with Ahura since 2012. The modules provided by Ahura are very much suitable for our needs on Quality and Workmanship. We have been using these modules continuously & even moved around these modules with absolutely no problems. The collapsible modules were also very good with no challenges on assembly & re-assembly. Ahura did not stop just providing these modules but were professional in assembling and dis-assembling them as per our needs. I wish them all the best and would recommend Ahura for their truly professional approach to all modular buildings."

Mr. Prabhu Gurusamy
DGM – WTG Engineering, VESTAS



OFFICE

FULLY FURNISHED AND
INTERIOR DECORATED



“ We have been using portacabins from Ahura for the past 10 years and have had a very satisfying experience. They have a vast range of prefab products. The quality from Ahura has been very good. Their service has been prompt & efficient.”

TESTIMONIALS

**Mr. Navin Dewaji – V P PGSU, Asia Pacific
Siemens Ltd.**

SECURITY CABIN



SPECIAL APPLICATIONS

“ TESTIMONIALS ”

AHURA make porta cabins are most reliable & genuine in quality. We are using more than 10 cabins for the past 5 years or more and all are in fantastic condition & do not require any maintenance.

Mr. Alpesh Patel
Purchase Head, APS



CLASSROOM

TESTIMONIALS

“ Best in class quality, service & after sales support. ”

Du Pont INDIA Ltd.

“ Products supplied by Ahura are robust & very good quality. We also found the after sales support from Ahura to be very good. ”

Mr. Brijesh Joshi – DGM Procurement
UPL Ltd



TOILETS



WEEKEND HOMES



TECHNICAL SPECIFICATIONS

(General, Specific requirements may attract other specs)

SIZE

Portacabins / Bunkhouses may be designed as per customer's specific requirements. However, typical sizes are as listed below :



Sr. No.	Length (Feet)	Width (Feet)	Height (Feet)
01	04'	04'	7.5'
02	06'	04'	7.5'
03	06'	06'	7.5'
04	08'	08'	8.5'
05	10'	10'	8.5'
06	12'	10'	8.5'
07	16'	10'	8.5'
08	20'	08'	8.5'
09	20'	10'	8.5'
10	20'	12'	8.5'

Sr. No.	Length (Feet)	Width (Feet)	Height (Feet)
11	24'	08'	8.5'
12	24'	10'	8.5'
13	24'	12'	8.5'
14	30'	08'	8.5'
15	30'	10'	8.5'
16	40'	08'	8.5'
17	40'	10'	8.5'
18	20'	20'	8.5'
19	40'	20'	8.5'
20	Desired	Desired	Desired

FLOOR

- Heavy duty ISMC & ISMA grid structure to give rigidity.
- All Ahura base frames thus formed have a grid size of 2' x 2'. Load bearing capacity ranges from 200 to 400 kg/m² of floor area depending on size of frame and area of application.
- We prefer not to use hollow tubes / HMPS sections in the base frame as these are less rigid and tend to give a jumpy effect when persons are walking over them.
- 18mm or 20mm thick duraboard over the 2' x 2' grid work for a durable base.

- 1.75mm or 2mm homogenous anti-scratch & anti-skid PVC floor carpet over the dura board as final finished floor.
- Toilet blocks, pantry units & other custom requirement cabins may also have 18mm granite / 16mm green marble / 3-5mm thick aluminum checkered plates specially designed as per your versatile needs. All these are installed in place of the PVC carpet & over the duraboard sheets which are standard.

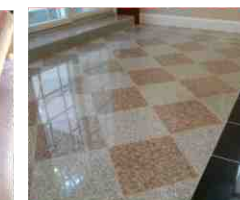
duraboard sheets



PVC floor carpet



aluminum checkered plates



granite marble

▷ WALLS

- 18SWG (1.2mm thk) flush / corrugated GI Sheets on the outside.
- Special applications may also have 16SWG (1.6mm thk) or 14SWG (2mm thk) sheets for walls. These may be used for extremely high corrosive environments.
- High end cabins may also have wooden finish pre-coated decorative planks or ACP sheets as final outer finish.
- There is a wide array of internal paneling options. Hollow PVC sheets, pre-laminated MDF or particle boards, pre-laminated fiber cement boards, ACP sheets, tiles, decorative interior cellulose sheets etc are a few of the options most clients prefer. Choosing a finish mainly depends of factors such as pricing, water resistance requirement, area of use etc.
- Cavity filled with special density thick insulation so as to avoid overheating of the cabin. Density options are 48kg/m³ RB slabs – fire rated; 32kg/m³ EPS slabs or 40kg/m³ PUF slabs.
- The inner surface of the toilets and all other wet areas shall be finished with special 6mm PVC sheets with air gap / ACP for longer & better durability against constant exposure to water & acidic reaction.



Hollow PVC sheets



pre-laminated MDF



particle boards,



pre-laminated fiber cement boards,



ACP sheets, tiles,



cellulose sheets

▷ ROOF



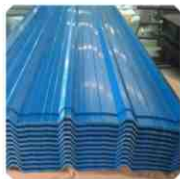
PUF WALL PANEL



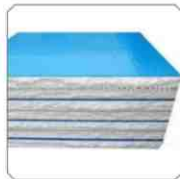
PUF ROOF PANEL



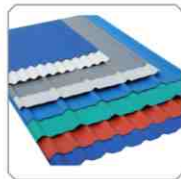
EPS ROOF PANEL



PPGI ROOF PANEL



EPS WALL PANEL



ROOF SHEET

- 18SWG (1.2mm thk) flush GI Sheets on the outside.
- Special applications may also have 16SWG (1.6mm thk) or 14SWG (2mm thk) sheets for walls. These may be used for extremely high corrosive environments.
- “Hot Air Roof Extraction” system may also be provided if required so as to draw fresh air from one end & remove hot air within the roof at the other hence reducing the temperature within the cabin during extreme heat condition. This system also has additional roof insulation over & above the air circulation system.
- Each roof sheet will have a 2” overlap on length side and sheet will be fully welded using CO₂ welding to prevent ingress of water.
- High end cabins may also have cellulose fiber roof tiles as final outer finish.
- There is a wide array of internal roof paneling options. 2' x 2' modular ceilings, hollow PVC sheets, pre laminated MDF or particle boards, pre-laminated fiber cement boards, ACP sheets, decorative interior cellulose sheets etc are a few of the options most clients prefer. Choosing a finish mainly depends of factors such as pricing, water resistance requirement, area of use etc.
- Cavity filled with special density thick insulation so as to avoid overheating of the cabin. Density options are 48kg/m³ RB slabs – fire rated; 32kg/m³ EPS slabs or 40kg/m³ PUF slabs.

**AHURA**www.aahura.com

TESTIMONIALS

“ It was Excellent working experience with Ahura. They understand the need of customer very well and deliver quality product on time. Their products are value for Money. Looking forward for future requirements. ”

Rakesh Kumar Biyani
Axalta Coating Systems India Private Limited

▷ WINDOWS

- Anodized or powder coated aluminum sliding windows of standard sizes 4' x 3' or 3' x 3' are provided with 4mm dark tinted glass. However, non-standard sizes are equally welcome to suit special requirements.
- Curtains / Venetian blinds may be provided for all / selected windows.
- Weather shades over all windows.
- Solid steel bar safety grills for windows are provided as standard.

▷ FURNITURE

- As per the customer's specific requirement.
- All furniture shall strictly be from treated 19mm blockboard + 1mm laminate for lifelong durability.
- Use of 19mm particle board / MDF board is strictly prohibited as the same tends to swell up when exposed to water or excessive humidity.

▷ LIFTING PROVISION

Suitable top lifting.

▷ INTERIOR

- a. The hollow tube structure visible from inside is primed with epoxy based primer. No finished paint is applied to inner shell frame.
- b. Inner wall & ceiling paneling as per end user choice shall be installed with insulation in between.

▷ ELECTRICALS

- All wiring shall be FRLF marked (Fire Retardant Lead Free).
- Switches & sockets shall be ISI marked of reputed make.
- Concealed wiring shall be provided unless specified otherwise.
- Main inlet plug adaptor for efficient & leak-proof flow of current.
- MCB for each circuit & main DB RCCB shall be provided for additional safety.
- Air-conditioning units may be provided wherever required.
- Louvered exhaust fans for removal of foul air in the toilet area.
- LED fittings / T5 tube fittings of reputed make provided as required.
- Ceiling / wall fans of reputed make shall be provided as standard.
- CAT 6 network cabling & telephone cabling provided as required.
- Solar / battery operated cabins may also be provided.

▷ LEGS

- At Ahura, we offer 3 types of base preparation & leg arrangement upto 1½' in height.
 - a. MS legs with pin arrangement for most uneven terrains
 - b. Fixed height MS legs to be bolted to the base of cabin
 - c. Compressed concrete blocks with 8 rebar having a height of 6", so as to hoist up the cabin at relatively flat terrains & save on steel cost.
 - d. Corresponding mini step assemblies may be provided.



no maintenance



secure & safe



on time delivery
services



termite proof



weather proof

▷ FINISH

All MS sections / tubes are thoroughly cleaned / sand blasted prior to cutting & assembly.

• Exterior :

a. Matt finish, UV resistant, PU paint on top of special grade anti rust 2 pack elastic PU primer specially recommended for GI sheets. All finish paints are marine grade.

b. The entire outer sheet flush surface is so welded that there is no application of putty on the outside preventing peel off with the passage of time. The entire surface is pure paint only.

c. 18SWG GI flats at sheet joints are stuck to the outer shell creating a life-long elastic joint (PU sealant no. 560 from 3M)

▷ DOORS

- Doors shall be double skinned pressed steel with insulation.
- Provided with reputed mortice latch and door closer.
- 18SWG GI flush sheets on either side with 16SWG HMPS section frame with horizontal & vertical stiffeners not more than 400mm apart.
- Filled with HD insulation in between.
- Special dyes for punching of hinges / locks for superior finish.
- SS L-drop shall be supplied for additional safety.
- Weather shade shall be provided over the door.
- Internal partition doors shall be aluminum / wooden openable / sliding type.
- Louvered ventilators may be provided at desired locations.

OUR CLIENTS



ALSTOM



BOMBARDIER



Vestas



DEEPAK
PHENOLICS



FAG

Gamesa



SIEMENS



KOHLER



Linde

SCHOTT
glass made of ideas

TBEA
Always Reliable



SUZLON



JACOBS



Ahura Enterprise Pvt. Ltd.

Office: 807, G.I.D.C., Makarpura,
Vadodara-390 010. Gujarat, India.

for more information please contact us on:

Mo: +91-9824095721 **Ph:** + 91 265 2641407

W: www.aahura.com **E:** aahura@aahura.com

Ahura Enterprise Pvt. Ltd. is committed to providing high quality products at excellent prices on time every time. Individual models are affordably priced.

For specific pricing for your needs, our team would be pleased to provide you with the most efficient & cost-effective solution. All inquiries are typically answered within three (3) business days.